



sabaFLEX

Product profile

sabaFLEX
AMANN GROUP
Col. Lot no.
2000 E1621
1500 m
120 evo

sabaFLEX
AMANN GROUP
Col. Lot no.
2000 E1621
1500 m
120 evo

sabaFLEX

Product profile

SabaFLEX – the all-rounder for all elastic applications. SabaFLEX is the elastic, high-quality, high-performance, reliable and innovative solution for stretch clothing and seams.

SabaFLEX is a sewing thread made of PTT (Polytrimethylenterephtalat), a modified polyester material with a specifically high elongation – it was developed by Amann especially for stitching elastic materials.

Stretch it! That's SabaFLEX. SabaFlex is about three times as extensible as conventional sewing threads.

This offers great advantages when sewing elastic materials and provides a basis for new manufacturing solutions.

SabaFLEX is offered in two tickets, SabaFLEX 120 evo and SabaFLEX 80, and in a wide range of colours.



str**e**tch it



Versatile in use

SabaFLEX for a seam as flexible and elastic as the material. Proven in practice many times. A revolution for any application in which garments must follow movements.

- Underwear, lingerie, functional underwear, nightwear
- Swimwear
- Sportswear, for example running or cycling clothing, riding and skiing trousers
- Functional clothing
- Casual wear and classic clothes made from elastic material
- Medical textiles, for example bandages and corsages

Your advantages using SabaFLEX

Improved quality

- SabaFLEX increases the seam elasticity of the lock stitch seam significantly.
- SabaFLEX provides a stretch reserve for all seams. The result: Less broken seams!

Improved comfort

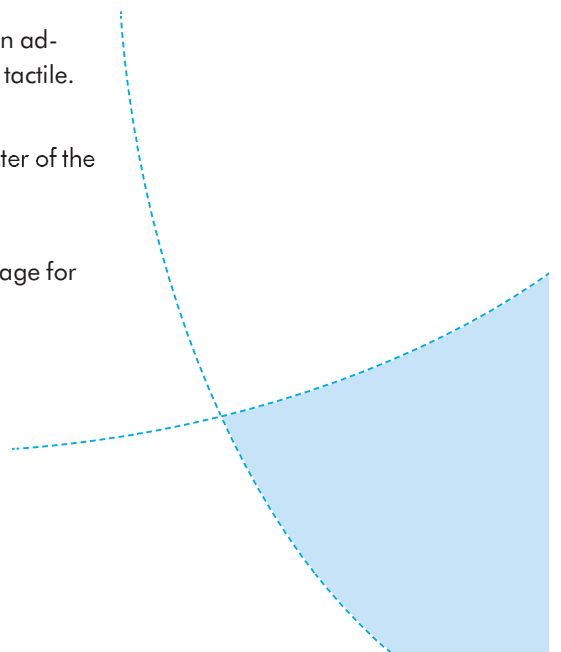
- Both sides of a SabaFLEX lock stitch seam are slim and soft. That is an advantage to the chain stitch, where the looper chain is prominent and tactile.

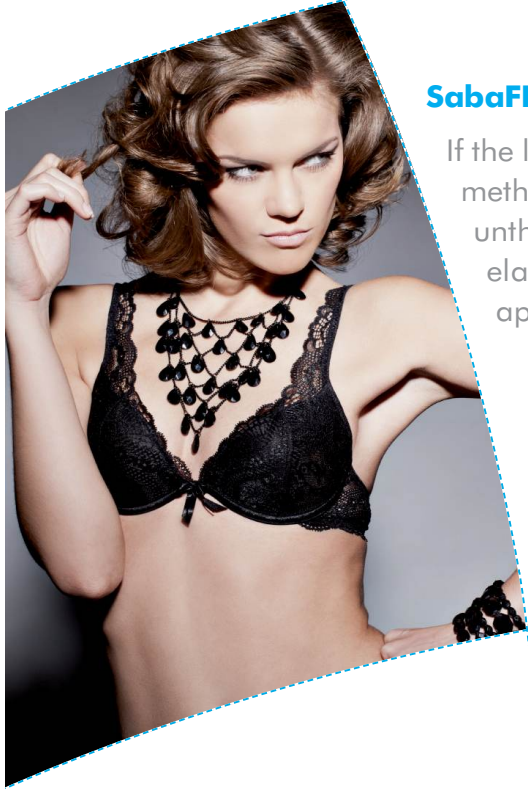
Improved look

- SabaFLEX allows finer seams that match the filigree look and character of the material.
- Lock stitch top stitches are now an option for elastic materials too.
- Bar tacks at the seam beginnings and ends are possible – an advantage for model design.

Improved efficiency

- All elastic straight seams can be done with the same stitch type (301 lock stitch) on a standard lock stitch machine – an advantage for your plant equipment.





SabaFLEX for elastic seams – Simply. Perfect.

If the lock stitch becomes elastic, we must rethink sewing methods. Many things can be realised now that had been unthinkable before. SabaFLEX makes the lock stitch seam elastic. This provides potential for innovation in many applications.

Underwear – SabaFLEX for fine material on the skin

Whether finest lingerie, underwear or nightwear – fine material on the skin demands soft and elastic seams. Lock stitch seams with SabaFLEX are soft and elastic. Their advantages are convincing compared to conventional production:

- Improved comfort in wear:
In contrast to two-thread chain stitch or covering stitch seams, they do not produce prominent seams on the inside.
- Superior look:
SabaFLEX allows finer seams that match the filigree look and character of the material.

Medical textiles – SabaFLEX for specific applications

Medical textiles are determined by their functions mainly and feature a very specific requirement profile. If elastic seams are required in production SabaFLEX is the innovative, technically convincing solution.

In the production of bandages SabaFLEX meets the high requirements regarding wear comfort and elasticity:

- The lock stitch seams are highly elastic and do not protrude.
- An advantage for sensitive skin because it prevents irritations.



Casual wear – SabaFLEX for seams that follow your movements

Casual wear - that means smart, casual business wear. Comfort is first priority. Here, SabaFLEX provides best wear comfort:

- THE option for back rise seams:
When sewing trousers from elastic materials, SabaFLEX lock stitch seams provide outstanding seam elasticity.
- “Bottleneck” neckline:
T-shirts and fashionable tops from knitted material become much more stretchable with elastic SabaFLEX lock stitch seams – SabaFLEX now even allows tight patterns. Also for necklines on children’s clothing, SabaFLEX is the perfect solution.
- Beautiful hems:
With SabaFLEX lock stitch, hems on elastic materials feature a very fine look.

Sportswear – Stretch it with SabaFLEX!

Where clothes are in motion, elastic seams are a must. For fitness clothes, sportswear, functional clothes, swimwear or riding and skiing trousers, elastic and durable seams are a special quality indicator. Thanks to SabaFLEX, this is not a problem:



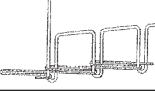
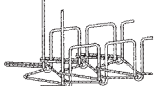
- With SabaFLEX, your clothes keep their shape:
SabaFLEX ensures the necessary seam elasticity – especially with tight-fitting sportswear or highly elastic functional clothes and around the neckline of jerseys, where now tight patterns can be realised.
- Made to perform:
Thanks to SabaFLEX, lock stitching can be used even for attaching elastic tapes or for elastic hems. Beneficial for wear comfort and durability.



Stretch it! With SabaFLEX – Sewing of elastic materials

Operation/ Application	Sewing thread	Conventional		with sabaFLEX	
		Stitch type (alternative)	Sewing thread	Stitch type	
Attaching elastic tapes	Core spun thread, spun thread, bulk yarn	304	SabaFLEX	301	
		401			
		406			
Darts	Core spun thread, spun thread, bulk yarn	401 plus bar tack, if necessary	SabaFLEX	301	
		401 plus long seam ends, if necessary			
Back rise seam	Core spun thread, spun thread	2x 301	SabaFLEX	1x 301	
		1x 401			
Neckline	Core spun thread, spun thread, bulk yarn	401	SabaFLEX	301	
		406			
Seams on elastic materials	Core spun thread, spun thread, bulk yarn	304	SabaFLEX	301	
		401			
		406			
Sew leather trim onto riding pants	Core spun thread, spun thread	"T-stitch"	SabaFLEX	301	
Bootleg	Core spun thread, spun thread	304	SabaFLEX	301	
Bandages	Core spun thread, spun thread, bulk yarn	304	SabaFLEX	301	
		401			
		406			
Pre attaching interlining	Core spun thread, spun thread, basting yarn	301	SabaFLEX	301	

Legend

Stitch type	Description	Illustration	Sewing thread consumption		
			Needle thread	Underthread	Total
301	Lock stitch		1.4	1.4	2.8
304	Zigzag		2.7	2.7	5.4
401	Two-thread chain stitch		1.7	3.1	4.8
406	Two-needle covering stitch		3.4	8.4	11.8

Sewing recommendations

Thread tension

Adjusting thread tension for SabaFLEX:

“As high as necessary – as low as possible” on all systems (needle and bobbin thread).

In general, thread tension can be reduced on a machine if core spun threads were used before. For filling the bobbin thread spool, above rule applies as well.

Thread guiding elements

SabaFLEX is extremely sensible to rough spots or small metal burrs on thread guiding elements. To prevent thread breaks due to this, we recommend regular cleaning and polishing of such thread guiding elements (eyes, holders, tension discs, thread take-up levers, hooks, etc.). If a hook tip is damaged it is necessary to replace the hook.

Any sharp edges on the presser foot or in the area of the needle hole or poor quality needles (insufficiently polished needle eyes) may result in thread break. In such case too, we recommend repolishing the relevant areas. Needles should be replaced regularly.

Sewing speed

If SabaFLEX is used as the needle and/or the bobbin thread for long seam lengths, it may be necessary to reduce the speed of high-speed machines (above 5000 stitches/min) to improve sewability.

**SabaFLEX must not be rewound –
this would result in thread brakes and a loss of elasticity.**

Article	Art. No.	Make-up		Needle recommendation	
				Nm	Size No.
saba TEX 80	0808	2000 m	FS	80-100	12-16
saba TEX 120 evo	0826	1500 m	FS	70-80	10-12



WINNER OF THE
texprocess
 innovationaward
 2011

AMANN
 GROUP

Amann & Soehne GmbH & Co. KG
 Hauptstraße 1
 74357 Boennigheim - Germany
 Telephone +49 7143 277-0
 Fax +49 7143 277-200
 www.amann.com



All information given in this document is approximate, for your convenience and first information only; and subject to differing individual technical specifications. The listed fields of use are application examples. Any recommendations are subject to change; depending on the sewing conditions and materials, adjustments may be required.