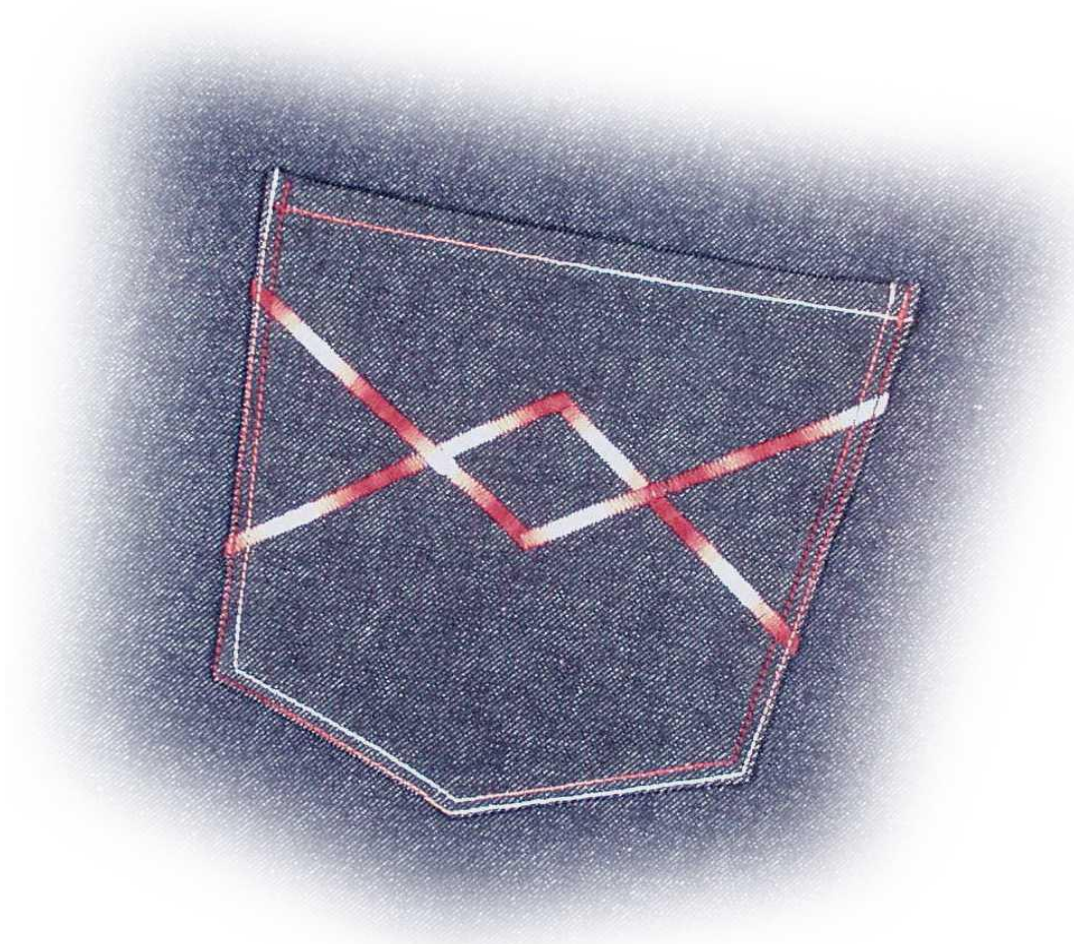




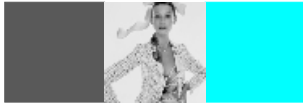
AMANN
GROUP



saba multicolour

Amann & Söhne GmbH & Co. KG
Hauptstraße 1, D-74357 Bönningheim
www.amann.com





AMANN
GROUP



Fashion can do everything – use a variety of colours

The colour range of saba offers a variety for the designer.

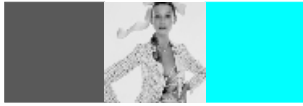
And now – we will top it:

saba multicolour - the thread allows a brand-new and specific variety – which makes your creation unique!

Buttonholes, decorative stitching, topstitches will be one more eye-catcher – to make the best out of jackets and trousers . . .

The colour range is comprised of nine colours. Furthermore individual dyeing is possible – fashion can do everything – realise your ideas with **saba multicolour**!





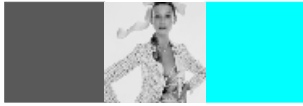
ZIERNÄHTE (DECORATIVE SEAMS)

saba multicolour 30

80

Col: 9984





ZIERNÄHTE (DECORATIVE SEAMS)

saba 30 multicolour

Col: 9984

9985

9986

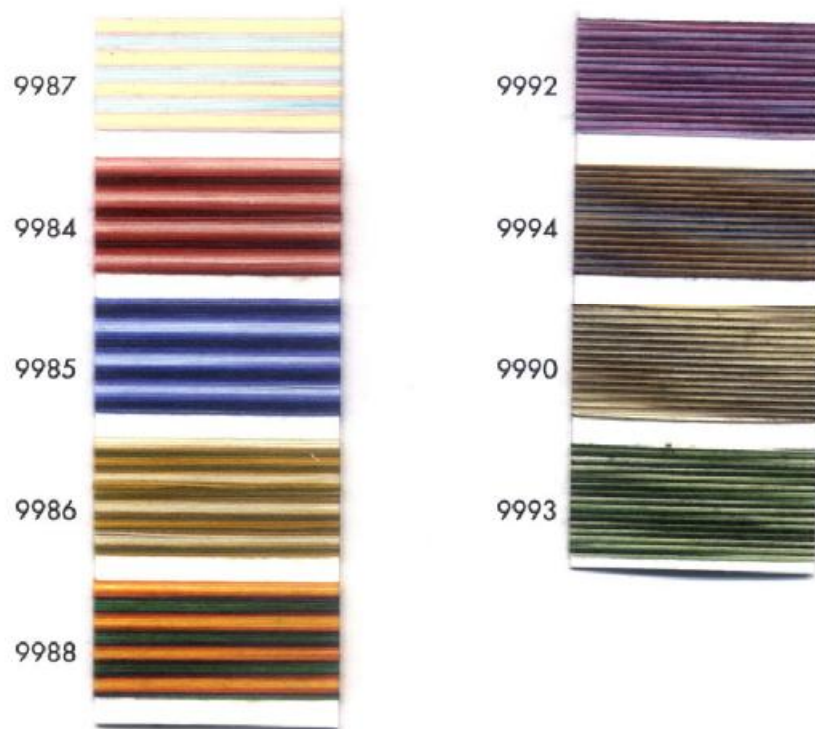
9987


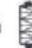
9988



saba^c multicolour

100% polyester sewing thread



Article No.	Product	Make-up
2217	Saba 30 multicolour	10 x 300 m 
2259	Saba ^c 80 multicolour	10 x 1.000 m 

Individuelle Einfärbungen mit Farbtönen aus der Saba Farbkarte sind auf Anfrage möglich.
Individual dye combinations using standard colours from the Saba colour card can be made on request.

Des coloris spécifiques non référencés dans la gamme Saba peuvent être fabriqués sur demande.

Su richiesta si effettuano tinture speciali con tonalità della cartella colori Saba.

Pueden realizarse producciones especiales, bajo pedido, utilizando combinaciones de la carta de colores estándar de Saba.



Farben liegen im Rahmen branchenüblicher Abweichungen. / Colours subject to usual trade standards. / Selon les coloris, des nuances ne peuvent être exclues. / Colori nell'ambito delle tolleranze consuete del settore. / Colores sujetos a los estándares habituales de la industria.

Die angegebene Pflegesymbolik kann in Abhängigkeit der verwendeten Textilrohstoffe und speziell im Fall von Kontrastnähten eingeschränkt sein.

Wir empfehlen in diesen Fällen individuelle Tests.

Depending on the type of raw material and especially with contrast seams the care instructions recommended may need to be modified.

In these cases we recommend individual tests.

Selon le type de matière première et particulièrement avec des coutures en opposition de coloris, les instructions de soin recommandées peuvent devoir être modifiées. Dans ce cas, nous préconisons des essais individuels.

In base al tipo di materia prima e soprattutto con cuciture di contrasto può essere necessario modificare i simboli di trattamento indicati.

Consigliamo di effettuare delle prove specifiche.

En función del material empleado y especialmente en pespunte de contraste, puede ser necesario modificar las recomendaciones para el cuidado del producto. En estos casos recomendamos realizar pruebas previas.

AMANN
GROUP

Amann & Söhne GmbH & Co.KG Hauptstraße 1 D-74357 Bönningheim
Tel.: +49 (0) 7143 277-0 Fax: +49 (0) 7143 277-200 www.amann.com