

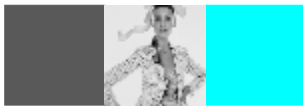


AMANN  
GROUP



## META 30 metallic sewing thread





## META 30 metallic sewing thread

35% metallised polyester film 65% polyester filament



META 30 Art.-No. 3093 700 m FS

FS =



META metallic thread takes you into a world of  
creativity and innovation.

107210  
GB 03000027  
L'Edison





## ZIERNÄHTE (DECORATIVE SEAMS)

---

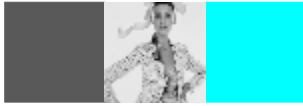
META 30

Col:

0496

0511





Information from AMANN's Technical Sewing Advisory Service

## Processing advice for Meta 30

Metallic-wrapped yarn on a polyester basis in colours silver, gold and bronze

### Main fields of application:

- ∅ Needle thread for decorative stitching
- ∅ Layer thread for cover stitching etc.

### Wash and care recommendation:

- ∅ Fastness to washing 40° C: grade 5



### Machines:

- ∅ Application on 1-needle-sewing machines, which are designed for the processing of sewing thread tickets  $\geq$  Nm 30/3 (needle size, stitch hole size, hook). In case of using lockstitch machines, we recommend to do processing tests on the planned machines in advance.
- ∅ In case of using 2-needle-sewing machines, the left thread may untwist and break.
- ∅ You should reduce the sewing speed to max. 3000 rpm

### Under thread:

- ∅ Core spun polyester Saba<sup>C</sup> 80
- ∅ If Meta is used as under thread, it feels rather unpleasant when worn directly on the skin.

### Needle size:

- ∅ The following needle size is recommended: NM 110 or thicker

In case of further questions please don't hesitate to contact our sewing advisory (Tel. **+49 / 7143 / 277 – 250**).

